

# Power Retouche

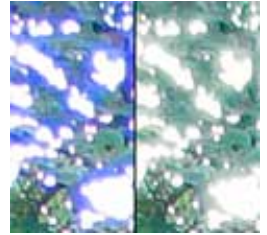
correct lens-distortion  
sharpen without artefacts ... & more...

**Photo-retouching plug-ins**

## A Photoshop plug-in for removing color-fringes

Most lenses produce some kind of chromatic aberration, which means green and purple get misaligned and create color fringes. Or when you photograph something against a hard back light, then the light will spread into the dark as a blue or purple fringe. Power Retouche Color Fringe Remover will cure all such problems.

- **Mac** version is for all versions of Photoshop and Elements and all OS versions.
- **Windows** version is for all versions of Photoshop, Elements, Fireworks, Paint Shop Pro, Corel Draw, Illustrator and other software that supports Photoshop plug-ins. See [list](#).



### Color Fringe plug-in - Tutorial

#### Benefits of the plug-in

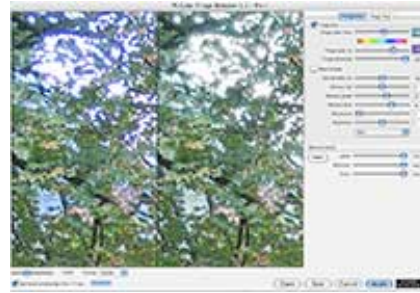
- **Full control over the fringe color and fringe detection**
- **Remove two fringe colors, or use double pass filtering**
- **Full control over color correction, saturation and brightness**
- **Not only removes the fringe color, but reconstructs the underlying color**

The Color Fringe plug-in works with these image modes (Windows and Mac)...  
8 & 16 bit / channel: RGB, CMYK.

#### Color fringe controls

This is the Color Fringe Remover plug-ins control panel (Windows). Click on the image to enlarge. The control panel and preview area can be changed by dragging the sides. The filter is actually two filters in one, so you can remove two fringe colors at once or do a double pass filtering.

1. Define fringe color
2. Adjust fringe detection
3. Remove fringe color
4. The plug-in automatically reconstructs the original color suppressed by the fringe color



#### Example - removing green and purple fringes



**The Color Fringe Remover can remove two fringes at once. In this example we removed the classic green fringe and its companion the purple fringe**

**The left image is the original.**



[Tutorial](#)

[Tutorial as pdf](#)

[Buy plug-ins now](#)

[Products overview](#)

[See Windows plug-in](#)

[See Mac plug-in](#)

[Download Win plug-ins](#)

[Download Mac plug-ins](#)

[Download tutorials](#)

## What is a color fringe?

### Several kinds of color fringes

Actually there are several kinds of color fringes. One comes from chromatic aberration, which is the phenomena that the various colors of the spectrum refract differently through lenses and therefore get slightly misaligned in the final picture; this shows up as a green fringe and a purple fringe. Another common fringe comes when you have a strong back light and a high contrast edge in front of it, like when photographing trees against the sky. This fringe is typically blue, violet or purple. Sometimes a purple halo, or fringe, appears around small strong lights (like a candle or a small bulb) against a dark background. The plug-in has presets for the most common fringes. Various lenses and situations produce different kinds of fringes and our Color Fringe Remover lets you fine tune the correction to any situation and save it for later use.



Chromatic aberration produces the classic green-purple fringe (enlarged 235%)



Hard back light can produce a blue, violet or purple fringe

## The color fringe controls

### Color fringe controls

This is the control set for fringe color one. The controls for fringe two are identical.

The sliders **Fringe color from** and **Fringe color to** determine the color range of the fringe.

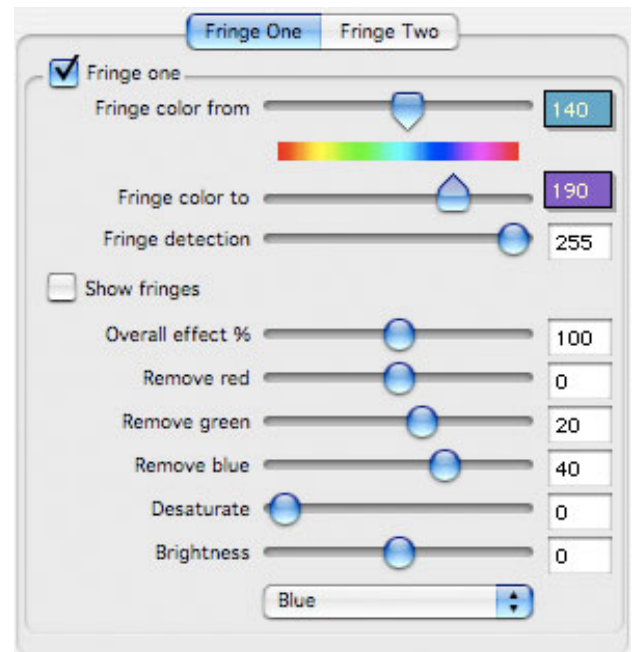
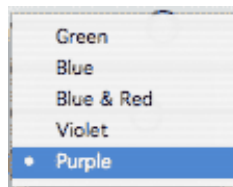
**Fringe detection** sets the filters sensitivity to what counts as a color fringe.

**Show fringes** will draw a color in the preview over the fringes that will be changed, this is meant as an aid in setting the color range and the detection level. Fringe one will be shown in red, fringe two in green.

The sliders below determine how the plug-in removes the fringe color and reconstructs the underlying color.

Finally there is a popup menu with presets for the most common fringes.

There are five preset fringe colors.

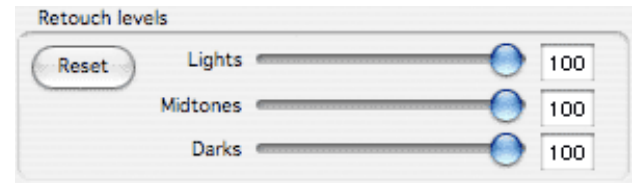


## Retouch levels

### Retouch Levels

These controls are common to most Power Retouche plug-ins.

They let you control the amount of filtering that will be applied to lights, mid tones and darks.



## Example - green and purple fringe

The following example is a typical instance of green and purple fringe. the green fringe is particularly saturated, so we had to change the default desaturation setting from 40 to 70 for the green fringe filter.

100%



Original image

200%



Filtered with the default green and purple settings from the popup menu. There is still some slight trace of the green fringe





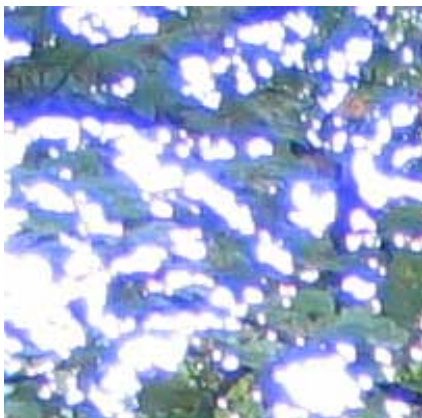
Here we raised green Desaturate from 40 to 70% to remove the residual green fringe



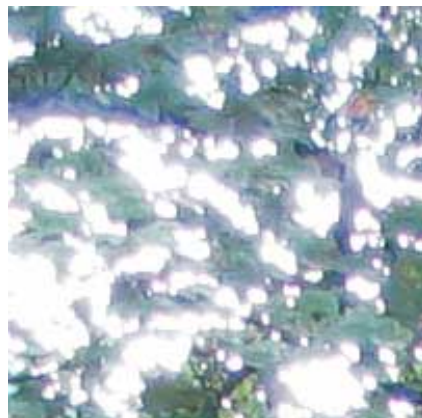
### Double pass filtering

#### Double pass filtering of wide and massive color fringes

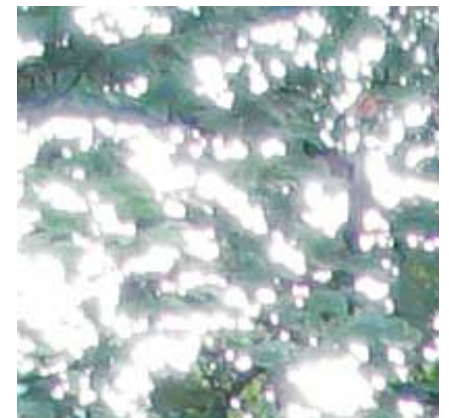
Sometimes a fringe may be so wide and massive, that the plug-in does not readily catch all of it using just fringe one or fringe two. In that case you can do a double pass by setting fringe one and fringe two to the same color. Such wide and massive fringes often appear when the fringe comes from hard back light situations as in the example below.



Original image 100%



Fringe one only



Fringe one and two (double pass)

Since we wanted to preserve some green, we turned remove green down from 20 to 0 in both cases.

### Problems reconstructing the underlying color

When the fringe color is very strong, it indicates that the underlying color is totally overshadowed and impossible to fully regenerate. This will typically leave a grayish fringe - - which in any case is more preferable than the original highly saturated fringe.



Original image with purple fringe



Purple fringe removed leaving a dull grayish fringe because the purple fringe has totally eradicated the original green

